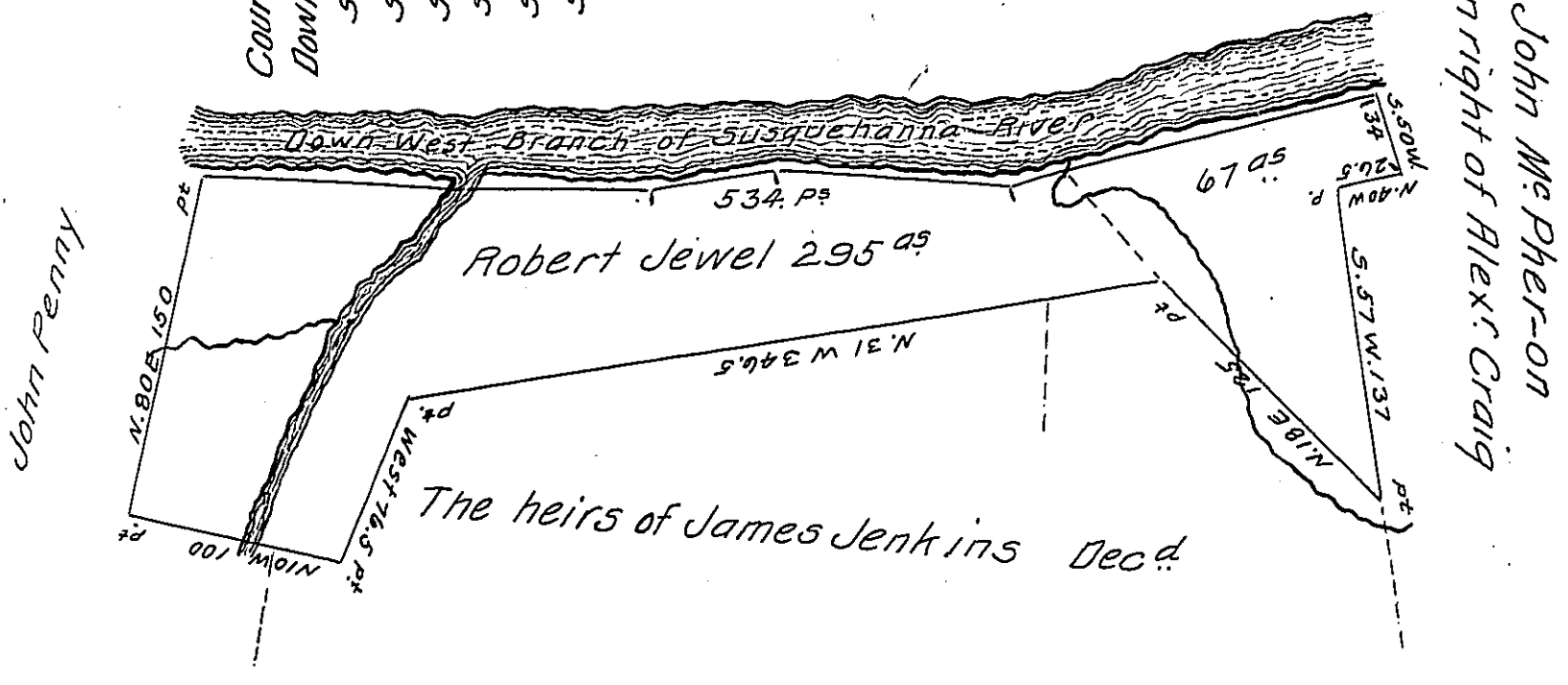


FORM NO 1.

Courses & Distances
 Down River
 S. 19 E. 110
 S. 23 E. 80
 S. 30 E. 60
 S. 18 E. 108
 S. 37 E. 19
 S. 41 E. 157
 534.



Situate in Buffalo township Union (late Berks) County. Surveyed the 6th day of May 1833 by virtue of an Order granted to ^{Robert Jewel} ~~James~~ dated the 3^d day of April 1769. N^o 351. Containing two hundred & Ninety five Acres with the Usual Allowance of Six pr. Cent &c.

A part of the above described tract of land viz. 228^{as} was Surveyed the 12th day of August 1769 for Thomas Palmer in pursuance of his order bearing date 3^d day of April 1769. N^o 266. - The other part ~~of~~ of the above described tract of land ~~of land~~ Containing Sixty Seven Acres is a part of a tract of land Surveyed the 22^d day of March 1770 by virtue of an Order granted to George Palmer dated the 3^d day of April 1769. N^o 422.

To Jacob Spangler Esq. }
 Surveyor General Penn. } P^r. Jn^o Hayes Con.

Geo. Palmer Pat.

IN TESTIMONY that the above is a copy of the original remaining on file in the Department of Internal Affairs of Pennsylvania, made conformably to an Act of Assembly approved the 16th day of February, 1833, I have hereunto set my Hand and caused the Seal of said Department to be affixed at Harrisburg, this eighth day of September 1908.

Henry Horne et al
 Secretary of Internal Affairs.